



MINIMA 600 - FRYERS

EF66



## 2 BOWLS, ELECTRIC TOP

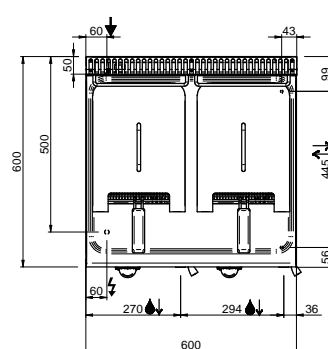
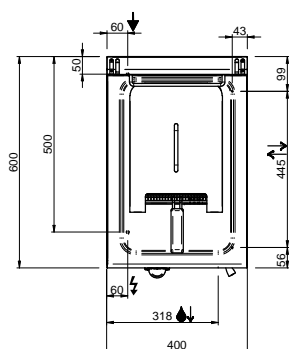
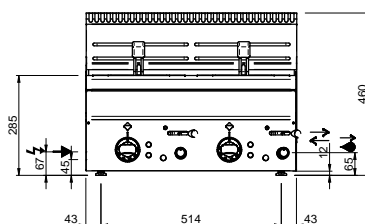
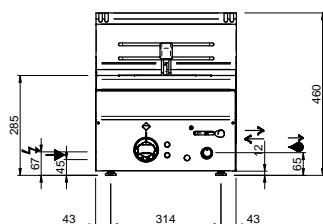
### TECHNICAL DATA:

External dimensions - WxDxH (cm)	60x60x27
Tank capacity (lt-GN)	10+10
Total power (kW)	9+9 = 18

### ADDITIONAL TECHNICAL DATA:

Electric elements (kW)	9+9
Supply (N)	400V 3N 50/60Hz
Weight (kg)	41
Volume (m3)	0,0041666666666667

Range made of 2 electric model top and 2 gas model top. Tank bottom with cold area and oil drain tap. Chromium plated steel basket. AISI 304 stainless steel lid. Gas heating: high performance burner with horizontal flame. Thermostatic adjustment of T° oil from 90°C to 190°C, with safety valve and thermocouple. Automatic lighting with pilot burner and piezoelectric device. Additional safety thermostat Electric heating: Incoloy stainless steel heating elements. Thermostatic adjustment of T° with warning light to control functioning. Additional safety thermostat.



#### LEGENDA SIMBOLI / LEGEND



INGRESSO GAS / GAS INLET  
(EN 10226-1) Ø M 1/2"



ALIMENTAZIONE ELETTRICA /  
POWER SUPPLY



INGRESSO ACQUA /  
WATER INLET Ø M 1/2"



SCARICO ACQUA / OLII  
WATER / OILS DRAIN



ATTACCO EQUIPOTENZIALE /  
EQUIPOTENTIAL



REGOLAZIONE PIEDINI /  
FEET ADJUSTMENT (h 0/+50)  
/ TOP VERSION (h 0/+5)